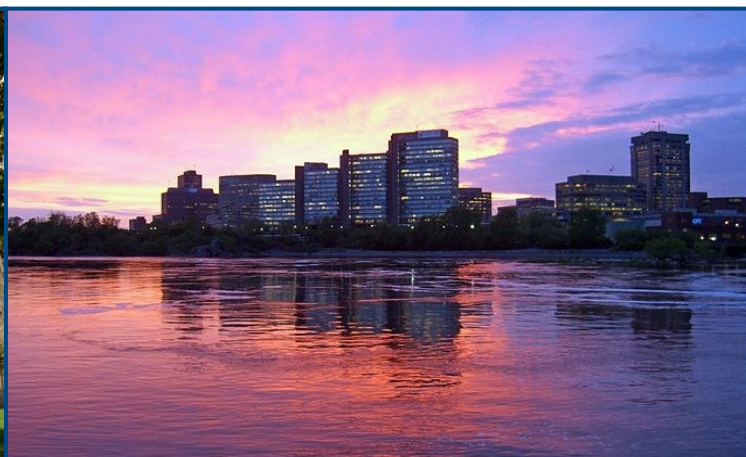


# FOR LEASE

Place du Portage I

50, rue Victoria

Gatineau, Québec



**TYPE OF PREMISES** | RETAIL  
**ADDITIONAL RENT** | CONTACT BROKER

**BASIC RENT** | TO BE NEGOTIATED  
**TAXES** | NOT INCLUDED

## FEATURES

- A beautiful unit previously occupied by a restaurant available with a rentable area of approximately  $\pm 233.9 \text{ m}^2$  (2,518 square feet).
- Located in downtown Hull just minutes from downtown Ottawa.
- Walking distance to the Canadian War Museum, the Ottawa River and the new Zibi development.
- The complex brings together four interconnected towers, for a total of approximately 10,000 federal employees.
- The commercial area is available to the general public and federal employees Monday through Friday from 7:00 a.m. to 6:00 p.m.
- The location is central and easily accessible via highways 5 and 50 and the Portage, Chaudière, Alexandria and Macdonald-Cartier bridges.
- Main tenants: Tim Hortons, Sushi shop and a variety of professionals including a dental clinic, a hair salon and a florist.

This disclaimer applies to BGIS Société Immobilière Solutions Globales Intégrées Inc. / BGIS Global Integrated Solutions Realty Inc. and to all other divisions of BGIS Global Integrated Solutions Canada LP ("BGIS"). The information set out herein, including, without limitation, any projections, images, opinions, assumptions and estimates obtained from third parties (the "Information") has not been verified by BGIS, and BGIS does not represent, warrant or guarantee the accuracy, correctness and completeness of the Information. BGIS does not accept or assume any responsibility or liability, direct or consequential, for the Information or the recipient's reliance upon the Information. The Information may change and any property described in the Information may be withdrawn from the market at any time without notice or obligation to the recipient. All Rights Reserved. Not intended to solicit anyone currently under contract.



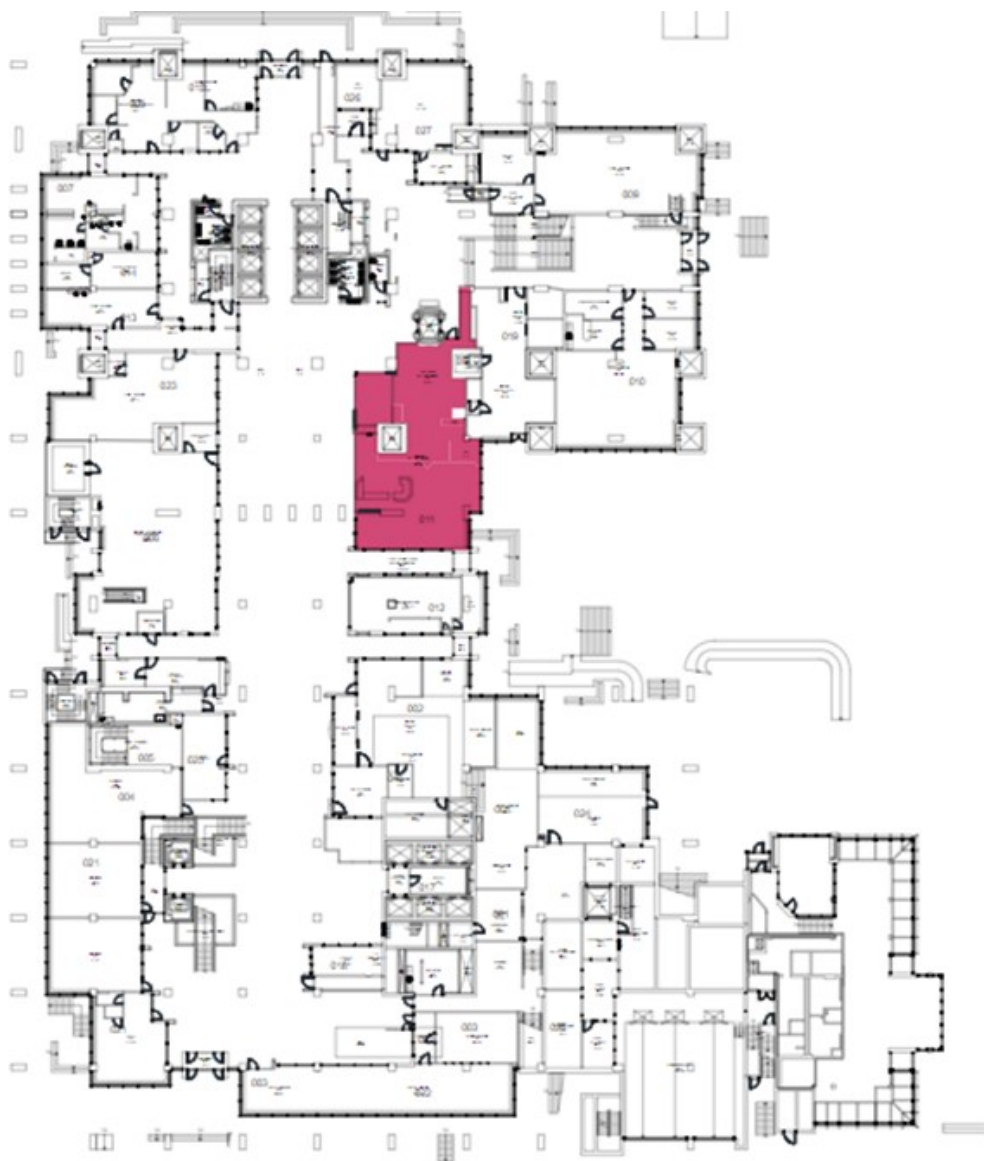
BGIS Société Immobilière Solutions Globales Intégrées Inc. /  
BGIS Global Integrated Solutions Realty Inc. | Brokerage  
800 René Lévesque Blvd. W, Unit 345 | Montréal, QC | H3B 1X9 | 1-877-897-6844

# FOR LEASE

Place du Portage I

50, rue Victoria

Gatineau, Québec



Unit C1- 011

±233.9 m<sup>2</sup>  
±2,518 SF

Very large premises, with beautiful windows located in the heart of Place du Portage I.  
The space is ideal for a restaurant.

This disclaimer applies to BGIS Société Immobilière Solutions Globales Intégrées Inc. / BGIS Global Integrated Solutions Realty Inc. and to all other divisions of BGIS Global Integrated Solutions Canada LP ("BGIS"). The information set out herein, including, without limitation, any projections, images, opinions, assumptions and estimates obtained from third parties (the "Information") has not been verified by BGIS, and BGIS does not represent, warrant or guarantee the accuracy, correctness and completeness of the Information. BGIS does not accept or assume any responsibility or liability, direct or consequential, for the Information or the recipient's reliance upon the Information. The Information may change and any property described in the Information may be withdrawn from the market at any time without notice or obligation to the recipient. All Rights Reserved. Not intended to solicit anyone currently under contract.



BGIS Société Immobilière Solutions Globales Intégrées Inc. /  
BGIS Global Integrated Solutions Realty Inc. | Brokerage  
800 René Lévesque Blvd. W, Unit 345 | Montréal, QC | H3B 1X9 | 1-877-897-6844

BGIS Société Immobilière Solutions Globales Intégrées Inc. /  
 BGIS Global Integrated Solutions Realty Inc. | Brokerage  
 800 René Lévesque Blvd. W, Unit 345 | Montréal, QC | H3B 1X9 | 1-877-897-6844