

PROFESSIONAL OFFICE SUITES FOR LEASE

39 Wynford Drive,
Toronto, Ontario



HIGHLIGHTS

- ✓ Improved office suites available for immediate possession
- ✓ **SHORT TERM OPTIONS AVAILABLE**
- ✓ Professional office environment
- ✓ Responsive and reliable property management
- ✓ Easy access to Don Valley Pkwy
- ✓ Located in close proximity to the Ontario Science Center, ample notable retailers, as well as residential communities
- ✓ 10 min to Hwy 401 and 404
- ✓ Located 13km from Downtown Toronto

RENTABLE AREA: From 1,820 SF to 15,874 SF

Office Suites

ASKING BASE RENT: Ask agent

ADDITIONAL RENT ESTIMATE: Ask agent

OCCUPANCY: Please discuss with listing agent
Short Term Options Available

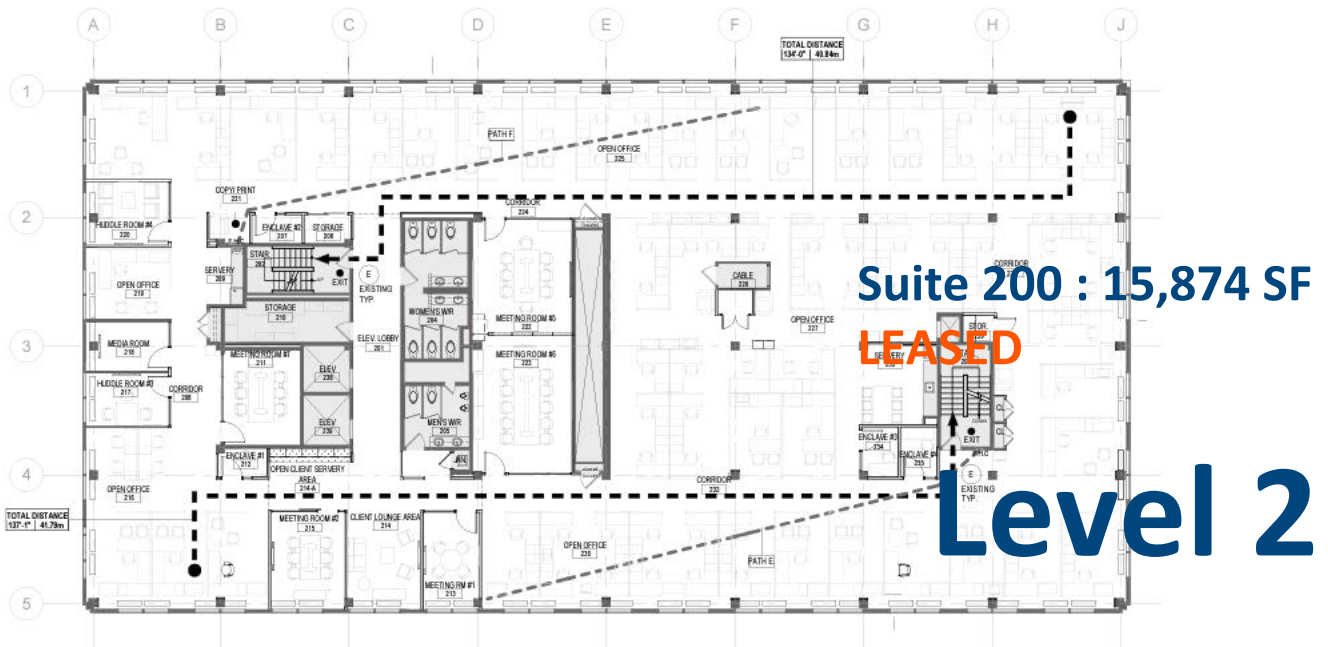
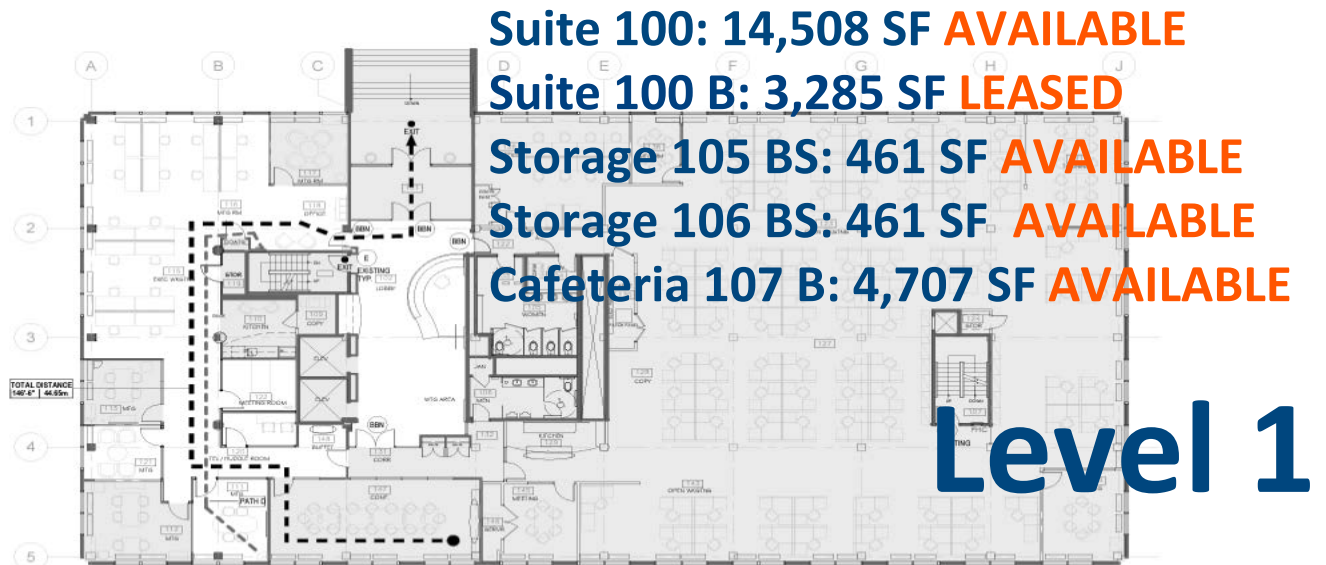
This disclaimer applies to BGIS Global Integrated Solutions Realty Inc./BGIS Société Immobilière Solutions Globales Intégrées Inc. and to all other divisions of BGIS Global Integrated Solutions Canada LP ("BGIS"). The information set out herein, including, without limitation, any projections, images, opinions, assumptions and estimates obtained from third parties (the "Information") has not been verified by BGIS, and BGIS does not represent, warrant or guarantee the accuracy, correctness and completeness of the Information. BGIS does not accept or assume any responsibility or liability, direct or consequential, for the information or the recipient's reliance upon the Information. The Information may change and any property described in the Information may be withdrawn from the market at any time without notice or obligation to the recipient. All Rights Reserved. Not intended to solicit anyone currently under contract.



BGIS Global Integrated Solutions Realty, Brokerage
4175 14th Avenue | Markham, ON | L3R 0J2 | 1-877-897-6844

FOR LEASE

39 Wynford
Drive, Toronto, ON



This disclaimer applies to BGIS Global Integrated Solutions Realty Inc./BGIS Société Immobilière Solutions Globales Intégrées Inc. and to all other divisions of BGIS Global Integrated Solutions Canada LP ("BGIS"). The information set out herein, including, without limitation, any projections, images, opinions, assumptions and estimates obtained from third parties (the "Information") has not been verified by BGIS, and BGIS does not represent, warrant or guarantee the accuracy, correctness and completeness of the Information. BGIS does not accept or assume any responsibility or liability, direct or consequential, for the Information or the recipient's reliance upon the Information. The Information may change and any property described in the Information may be withdrawn from the market at any time without notice or obligation to the recipient. All Rights Reserved. Not intended to solicit anyone currently under contract.



BGIS Global Integrated Solutions Realty, Brokerage
4175 14th Avenue | Markham, ON | L3R 0J2 | 1-877-897-6844

**39 Wynford
Drive, Toronto ON**

AS-BUILT DRAWING
 THE INFORMATION CONTAINED HEREIN IS THE PROPERTY OF THE ARCHITECT AND IS TO BE USED ONLY FOR THE PROJECT AND LOCATION SPECIFICALLY IDENTIFIED HEREON. IT IS NOT TO BE REPRODUCED, COPIED, OR TRANSMITTED IN ANY FORM OR BY ANY MEANS, ELECTRONIC OR MECHANICAL, WITHOUT THE WRITTEN PERMISSION OF THE ARCHITECT.

NEW PLUMBING KEY NOTES:
 ♦ INSTALLED NEW PLUMBING FIXTURE. PROVIDED CONNECTIONS TO EXISTING SERVICES. WATER, SANITARY, VENT PIPING AS REQUIRED.
 ♦ PUMP/RECEIVER.

THIRD FLOOR OFFICE - PLUMBING NEW WORK PLAN
 DATE: 07/20/2023

PROJECT INFORMATION

NO.	DATE	DESCRIPTION
1	07/20/2023	ISSUED FOR PERMIT
2		
3		
4		
5		
6		
7		
8		
9		
10		

PROJECT
WatServ
 OFFICE
 30 Watford Drive
 NORTH YORK, ON

DATE
THIRD FLOOR
OFFICE
PLUMBING NEW WORK PLAN

DRAWING REVISIONS

NO.	DATE	DESCRIPTION
1	07/20/2023	ISSUED FOR PERMIT
2		
3		
4		
5		
6		
7		
8		
9		
10		

Suite 301: 3,273 SF AVAILABLE

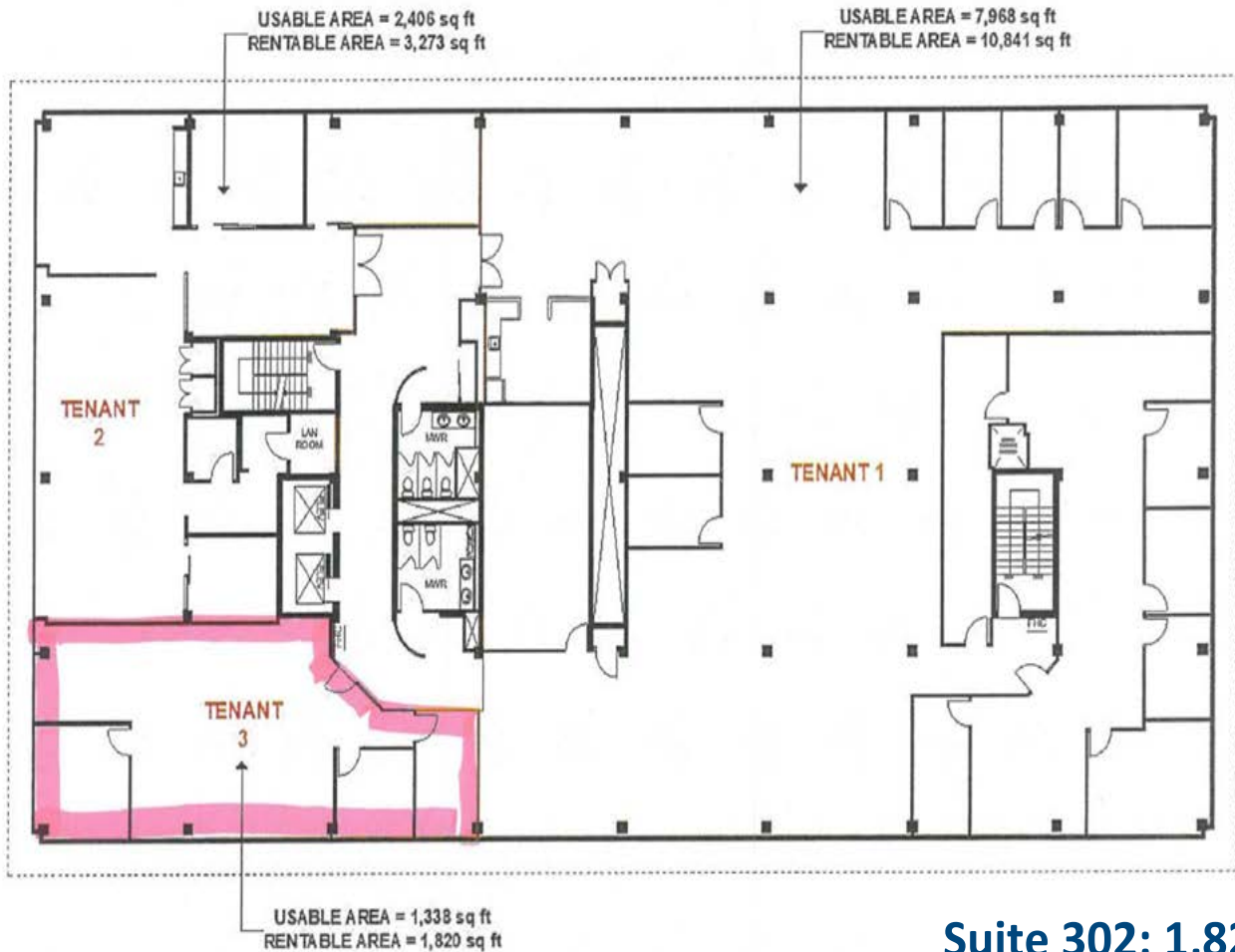


BGIS Global Integrated Solutions Realty, Brokerage
4175 14th Avenue | Markham, ON | L3R 0J2 | 1-877-897-6844

FOR LEASE

39 Wynford
Drive, Toronto ON

UNIT #302



Suite 302: 1,820 SF
AVAILABLE

This disclaimer applies to BGIS Global Integrated Solutions Realty Inc./BGIS Société Immobilière Solutions Globales Intégrées Inc. and to all other divisions of BGIS Global Integrated Solutions Canada LP ("BGIS"). The information set out herein, including, without limitation, any projections, images, opinions, assumptions and estimates obtained from third parties (the "Information") has not been verified by BGIS, and BGIS does not represent, warrant or guarantee the accuracy, correctness and completeness of the Information. BGIS does not accept or assume any responsibility or liability, direct or consequential, for the information or the recipient's reliance upon the Information. The Information may change and any property described in the Information may be withdrawn from the market at any time without notice or obligation to the recipient. All Rights Reserved. Not intended to solicit anyone currently under contract.

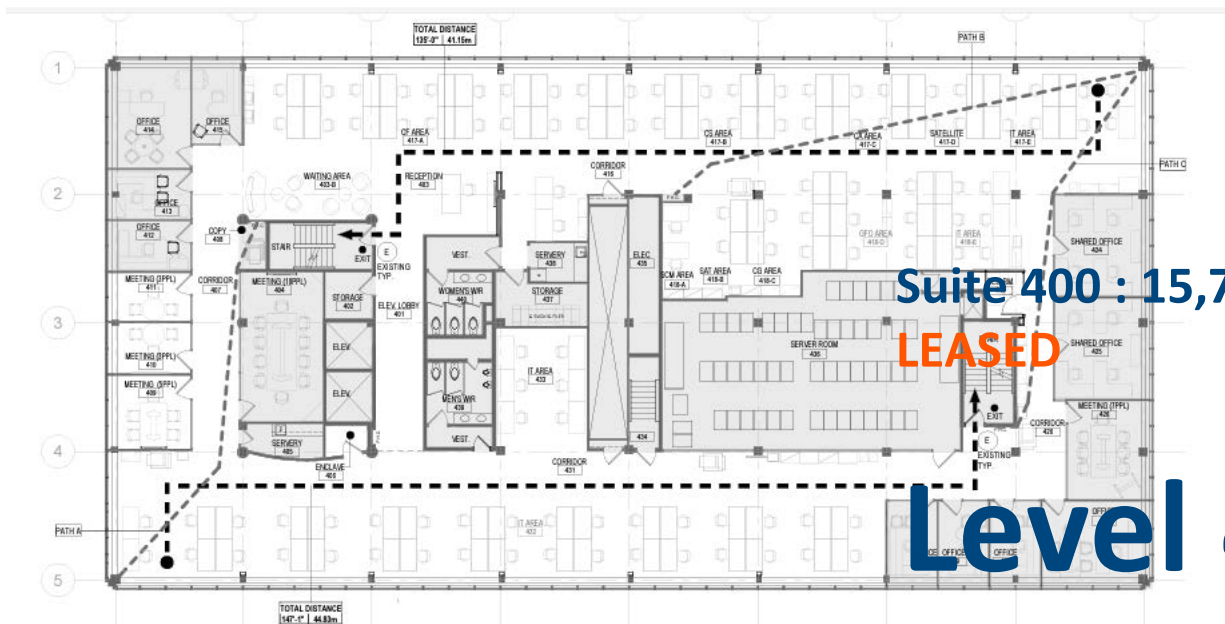
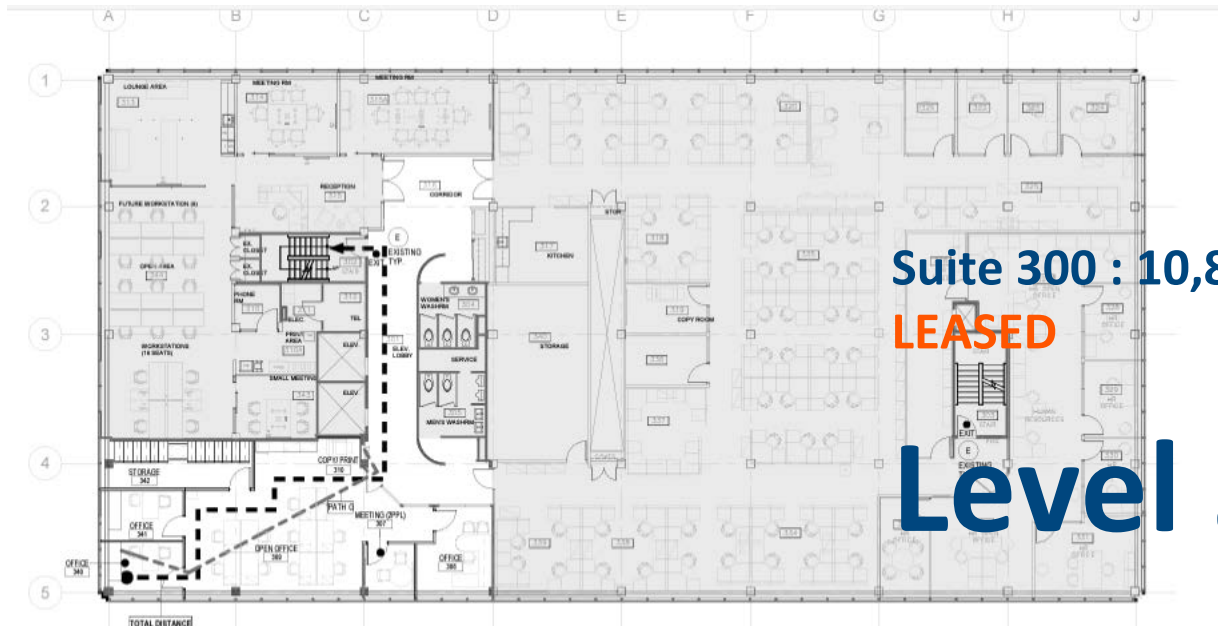


BGIS Global Integrated Solutions Realty, Brokerage
4175 14th Avenue | Markham, ON | L3R 0J2 | 1-877-897-6844

FOR LEASE

39 Wynford
Drive, Toronto, ON

FLOOR PLANS



This disclaimer applies to BGIS Global Integrated Solutions Realty Inc./BGIS Société Immobilière Solutions Globales Intégrées Inc. and to all other divisions of BGIS Global Integrated Solutions Canada LP ("BGIS"). The information set out herein, including, without limitation, any projections, images, opinions, assumptions and estimates obtained from third parties (the "Information") has not been verified by BGIS, and BGIS does not represent, warrant or guarantee the accuracy, correctness and completeness of the Information. BGIS does not accept or assume any responsibility or liability, direct or consequential, for the information or the recipient's reliance upon the Information. The Information may change and any property described in the Information may be withdrawn from the market at any time without notice or obligation to the recipient. All Rights Reserved. Not intended to solicit anyone currently under contract.

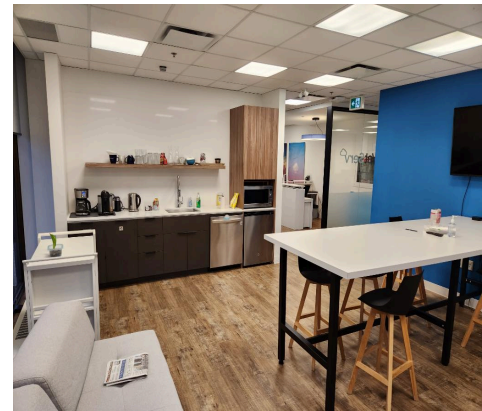
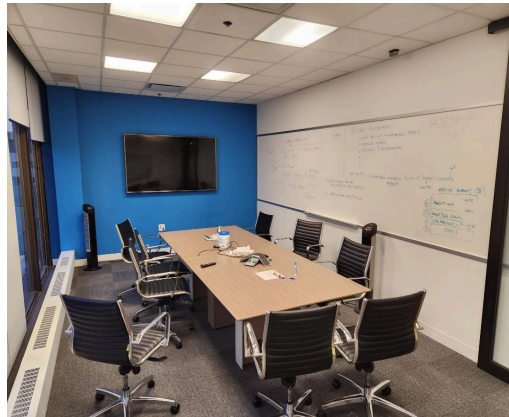
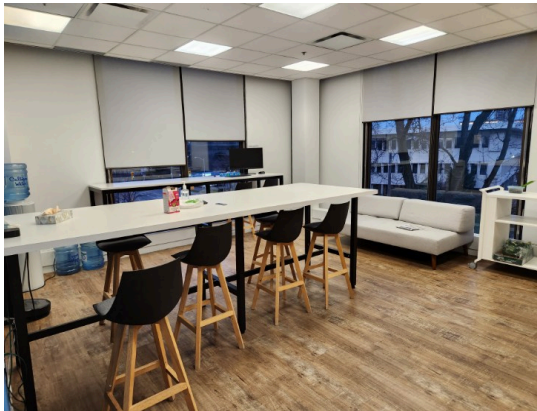


BGIS Global Integrated Solutions Realty, Brokerage
4175 14th Avenue | Markham, ON | L3R 0J2 | 1-877-897-6844

FOR LEASE

39 Wynford
Drive, Toronto, ON

PICTURES



This disclaimer applies to BGIS Global Integrated Solutions Realty Inc./BGIS Société Immobilière Solutions Globales Intégrées Inc. and to all other divisions of BGIS Global Integrated Solutions Canada LP ("BGIS"). The information set out herein, including, without limitation, any projections, images, opinions, assumptions and estimates obtained from third parties (the "Information") has not been verified by BGIS, and BGIS does not represent, warrant or guarantee the accuracy, correctness and completeness of the Information. BGIS does not accept or assume any responsibility or liability, direct or consequential, for the Information or the recipient's reliance upon the Information. The Information may change and any property described in the Information may be withdrawn from the market at any time without notice or obligation to the recipient. All Rights Reserved. Not intended to solicit anyone currently under contract.



BGIS Global Integrated Solutions Realty, Brokerage
4175 14th Avenue | Markham, ON | L3R 0J2 | 1-877-897-6844

FOR LEASE

**39 Wynford
Drive, Toronto ON**

PHOTOS



This disclaimer applies to BGIS Global Integrated Solutions Realty Inc./BGIS Société Immobilière Solutions Globales Intégrées Inc. and to all other divisions of BGIS Global Integrated Solutions Canada LP ("BGIS"). The information set out herein, including, without limitation, any projections, images, opinions, assumptions and estimates obtained from third parties (the "Information") has not been verified by BGIS, and BGIS does not represent, warrant or guarantee the accuracy, correctness and completeness of the Information. BGIS does not accept or assume any responsibility or liability, direct or consequential, for the information or the recipient's reliance upon the Information. The Information may change and any property described in the Information may be withdrawn from the market at any time without notice or obligation to the recipient. All Rights Reserved. Not intended to solicit anyone currently under contract.

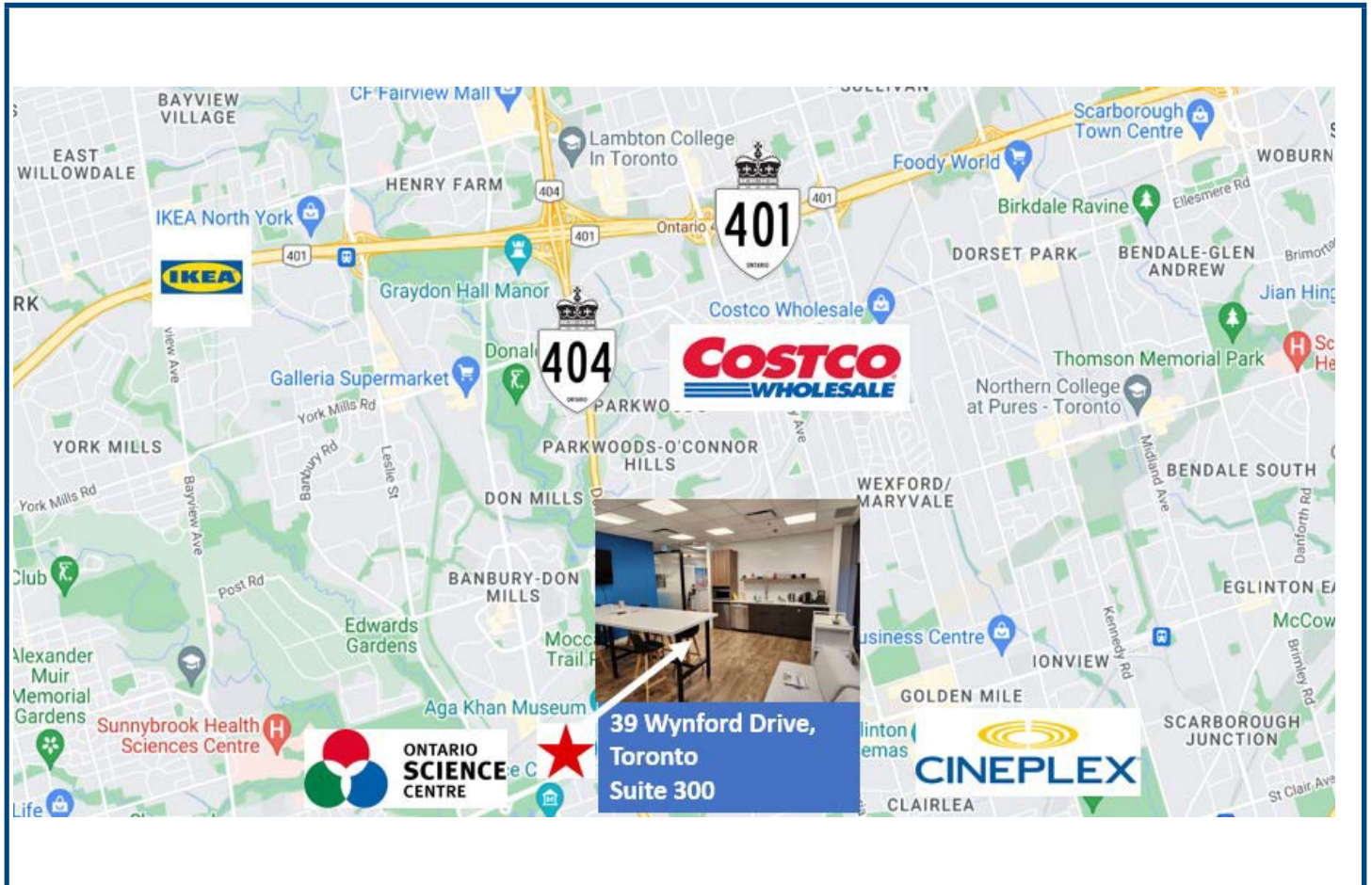


BGIS Global Integrated Solutions Realty, Brokerage
4175 14th Avenue | Markham, ON | L3R 0J2 | 1-877-897-6844

FOR LEASE

**39 Wynford
Drive, Toronto ON**

LOCATION MAP



FOR MORE INFORMATION PLEASE CONTACT:

Sandra Donoso - Broker
Brokerage Coordinator
sandra.donoso@bgis.com
Cell: 416-436-3798

This disclaimer applies to BGIS Global Integrated Solutions Realty Inc./BGIS Société Immobilière Solutions Globales Intégrées Inc. and to all other divisions of BGIS Global Integrated Solutions Canada LP ("BGIS"). The information set out herein, including, without limitation, any projections, images, opinions, assumptions and estimates obtained from third parties (the "Information") has not been verified by BGIS, and BGIS does not represent, warrant or guarantee the accuracy, correctness and completeness of the Information. BGIS does not accept or assume any responsibility or liability, direct or consequential, for the Information or the recipient's reliance upon the Information. The Information may change and any property described in the Information may be withdrawn from the market at any time without notice or obligation to the recipient. All Rights Reserved. Not intended to solicit anyone currently under contract.



BGIS Global Integrated Solutions Realty, Brokerage
4175 14th Avenue | Markham, ON | L3R 0J2 | 1-877-897-6844