

PROFESSIONAL OFFICE SUITES FOR LEASE

39 Wynford Drive,
Toronto, Ontario



HIGHLIGHTS

- ✓ Improved office suites available for immediate possession
- ✓ Professional office environment
- ✓ Responsive and reliable property management
- ✓ Easy access to Don Valley Pkwy
- ✓ Located in close proximity to the Ontario Science Center, ample notable retailers, as well as residential communities
- ✓ 10 min to Hwy 401 and 404
- ✓ Located 13km from Downtown Toronto

RENTABLE AREA: From 1,820 SF to 15,874 SF

Office Suites

ASKING BASE RENT: Ask agent- Attractive

Rates

ADDITIONAL RENT ESTIMATE: \$15.92 SF
(2025)

OCCUPANCY: Please discuss with listing agent
Short Term Options Available

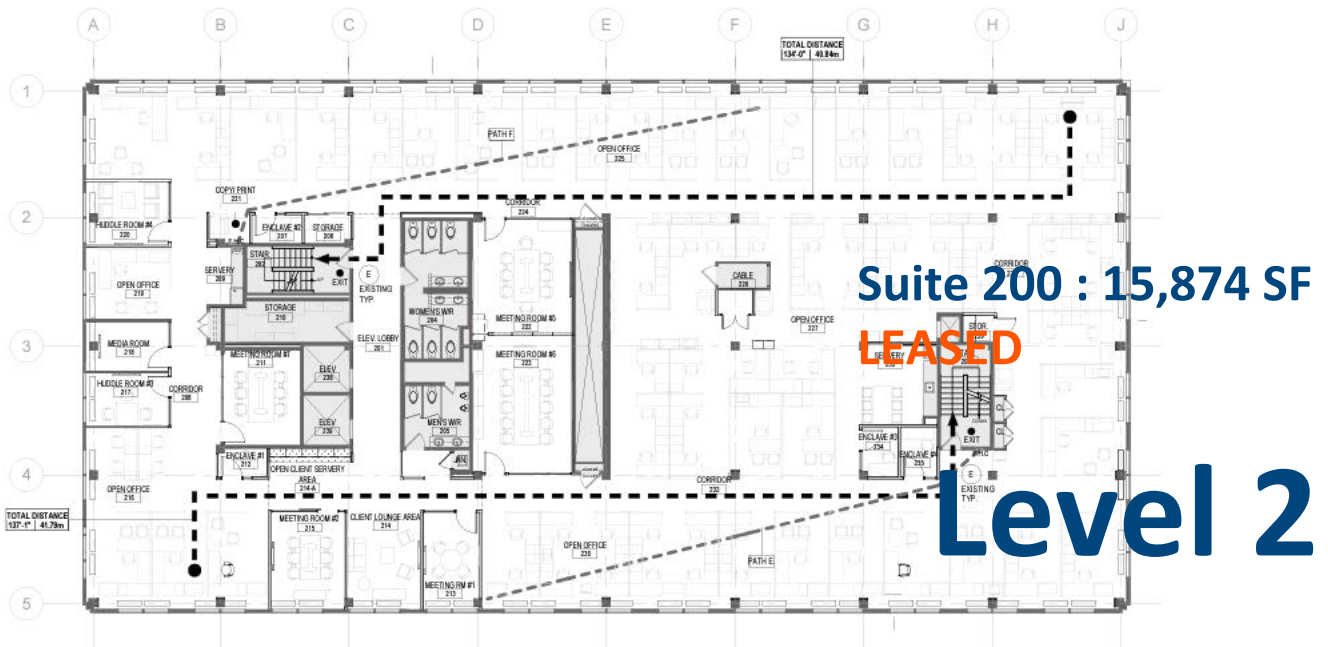
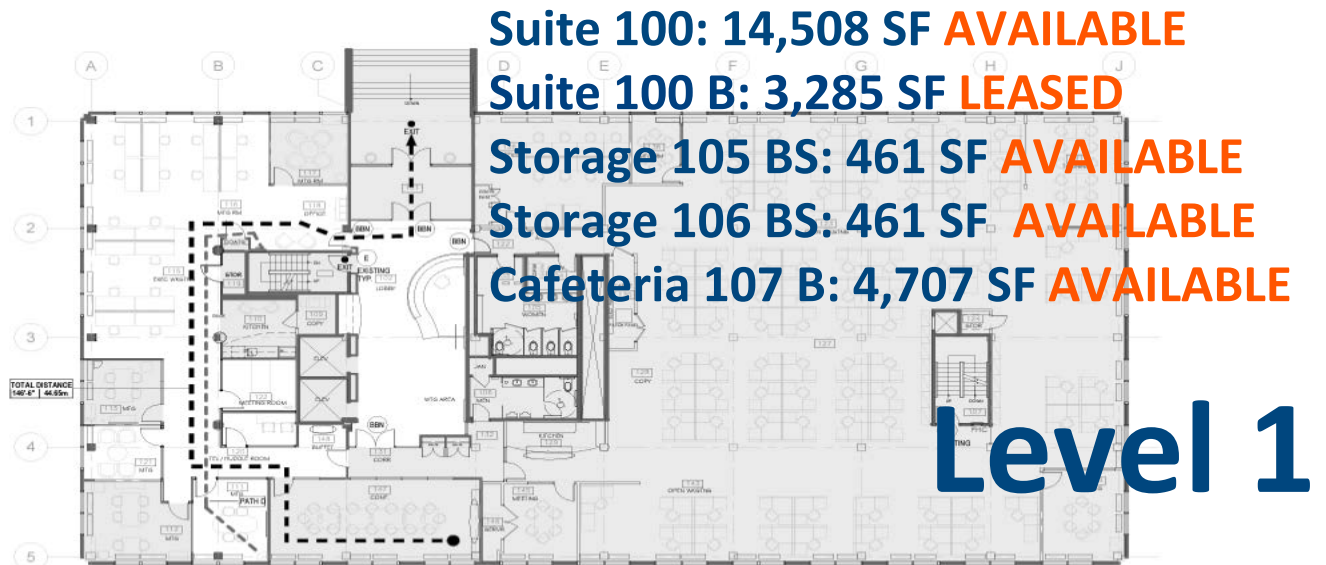
This disclaimer applies to BGIS Global Integrated Solutions Realty Inc./BGIS Société Immobilière Solutions Globales Intégrées Inc. and to all other divisions of BGIS Global Integrated Solutions Canada LP ("BGIS"). The information set out herein, including, without limitation, any projections, images, opinions, assumptions and estimates obtained from third parties (the "Information") has not been verified by BGIS, and BGIS does not represent, warrant or guarantee the accuracy, correctness and completeness of the Information. BGIS does not accept or assume any responsibility or liability, direct or consequential, for the information or the recipient's reliance upon the Information. The Information may change and any property described in the Information may be withdrawn from the market at any time without notice or obligation to the recipient. All Rights Reserved. Not intended to solicit anyone currently under contract.



BGIS Global Integrated Solutions Realty, Brokerage
4175 14th Avenue | Markham, ON | L3R 0J2 | 1-877-897-6844

FOR LEASE

39 Wynford
Drive, Toronto, ON



This disclaimer applies to BGIS Global Integrated Solutions Realty Inc./BGIS Société Immobilière Solutions Globales Intégrées Inc. and to all other divisions of BGIS Global Integrated Solutions Canada LP ("BGIS"). The information set out herein, including, without limitation, any projections, images, opinions, assumptions and estimates obtained from third parties (the "Information") has not been verified by BGIS, and BGIS does not represent, warrant or guarantee the accuracy, correctness and completeness of the Information. BGIS does not accept or assume any responsibility or liability, direct or consequential, for the Information or the recipient's reliance upon the Information. The Information may change and any property described in the Information may be withdrawn from the market at any time without notice or obligation to the recipient. All Rights Reserved. Not intended to solicit anyone currently under contract.

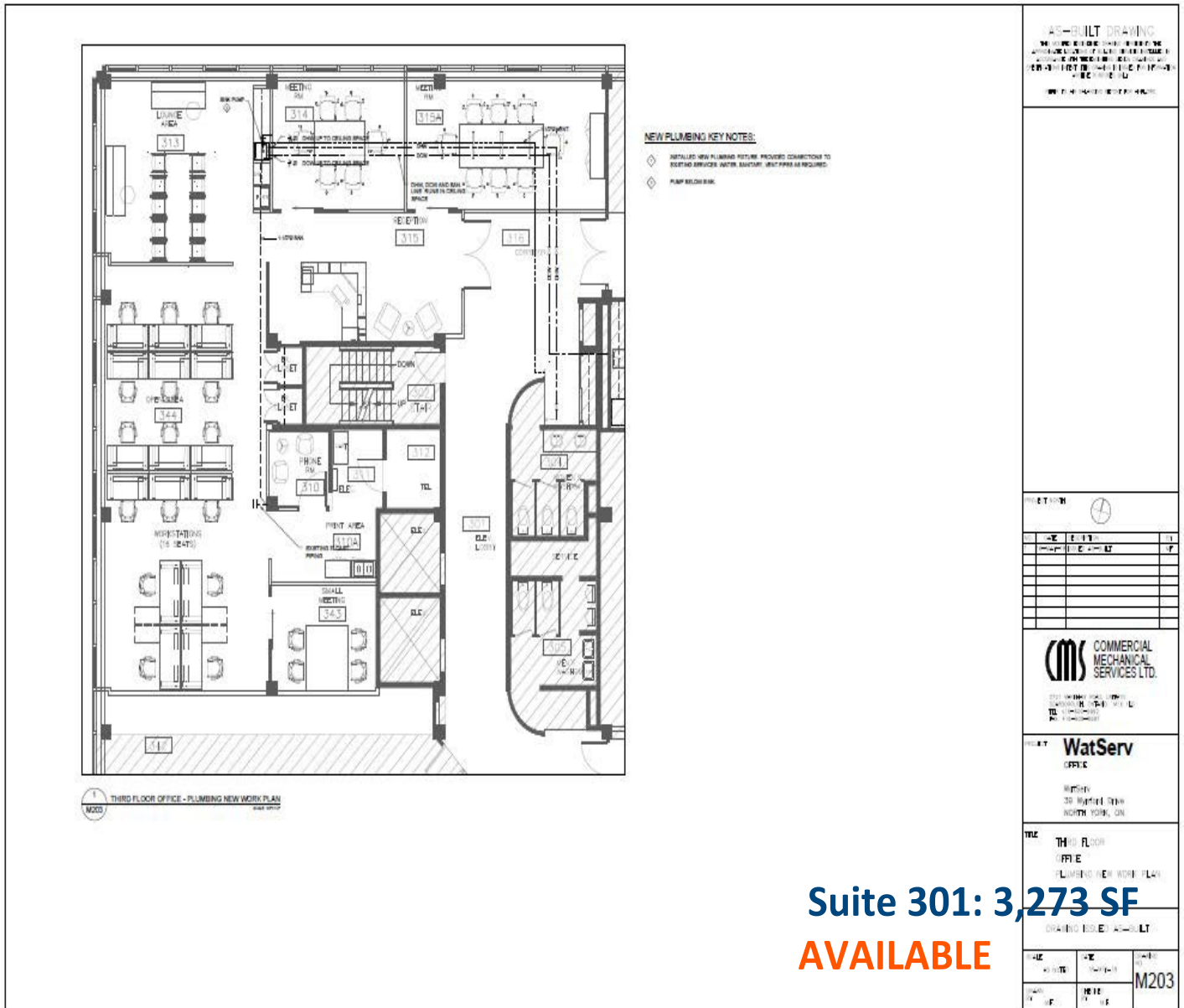


BGIS Global Integrated Solutions Realty, Brokerage
4175 14th Avenue | Markham, ON | L3R 0J2 | 1-877-897-6844

FOR LEASE

39 Wynford
Drive, Toronto ON

FLOOR PLANS



Suite 301: 3,273 SF
AVAILABLE

This disclaimer applies to BGIS Global Integrated Solutions Realty Inc./BGIS Société Immobilière Solutions Globales Intégrées Inc. and to all other divisions of BGIS Global Integrated Solutions Canada LP ("BGIS"). The information set out herein, including, without limitation, any projections, images, opinions, assumptions and estimates obtained from third parties (the "Information") has not been verified by BGIS, and BGIS does not represent, warrant or guarantee the accuracy, correctness and completeness of the Information. BGIS does not accept or assume any responsibility or liability, direct or consequential, for the Information or the recipient's reliance upon the Information. The Information may change and any property described in the Information may be withdrawn from the market at any time without notice or obligation to the recipient. All Rights Reserved. Not intended to solicit anyone currently under contract.

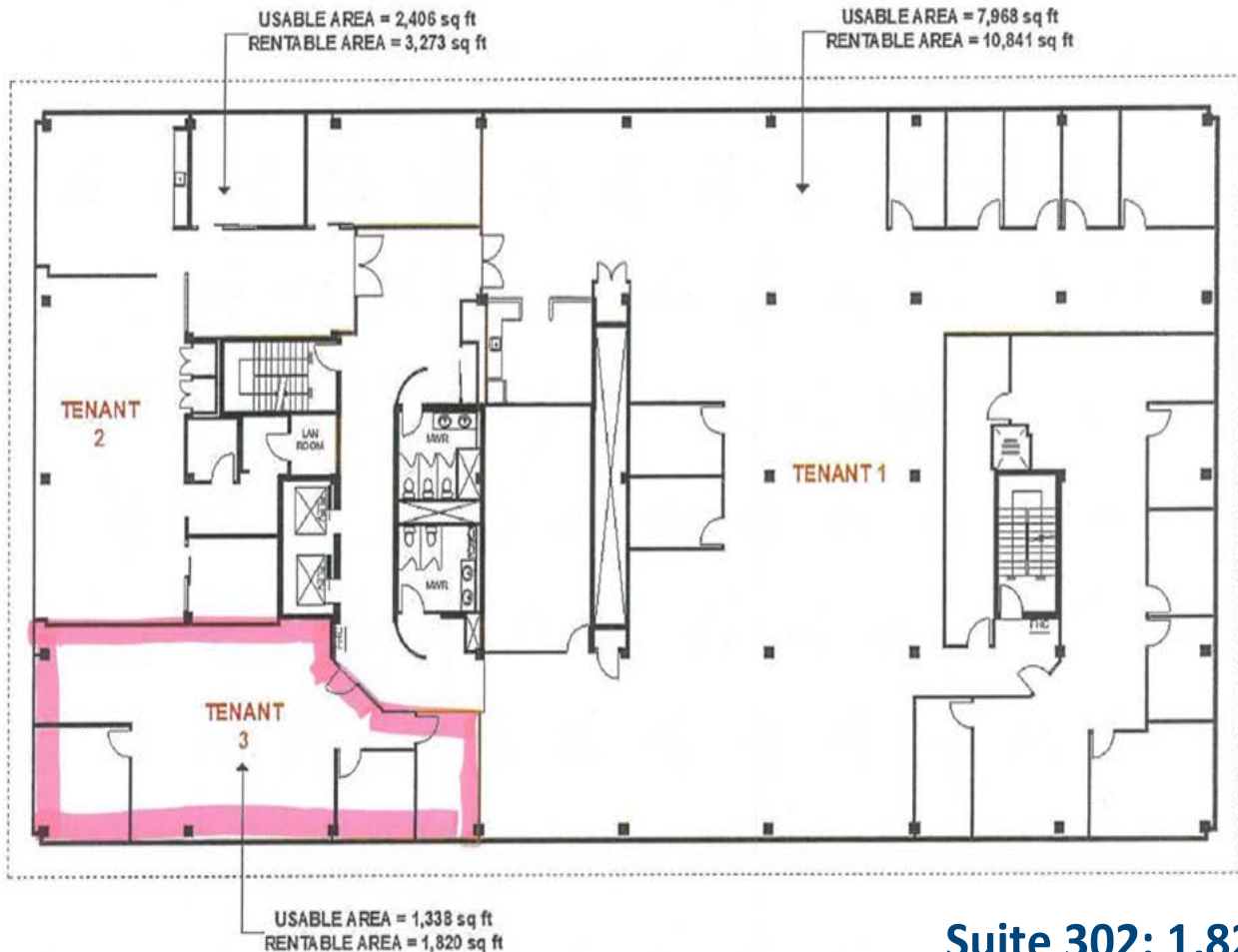


BGIS Global Integrated Solutions Realty, Brokerage
4175 14th Avenue | Markham, ON | L3R 0J2 | 1-877-897-6844

FOR LEASE

39 Wynford
Drive, Toronto ON

UNIT #302



Suite 302: 1,820 SF
AVAILABLE

This disclaimer applies to BGIS Global Integrated Solutions Realty Inc./BGIS Société Immobilière Solutions Globales Intégrées Inc. and to all other divisions of BGIS Global Integrated Solutions Canada LP ("BGIS"). The information set out herein, including, without limitation, any projections, images, opinions, assumptions and estimates obtained from third parties (the "Information") has not been verified by BGIS, and BGIS does not represent, warrant or guarantee the accuracy, correctness and completeness of the Information. BGIS does not accept or assume any responsibility or liability, direct or consequential, for the information or the recipient's reliance upon the Information. The Information may change and any property described in the Information may be withdrawn from the market at any time without notice or obligation to the recipient. All Rights Reserved. Not intended to solicit anyone currently under contract.

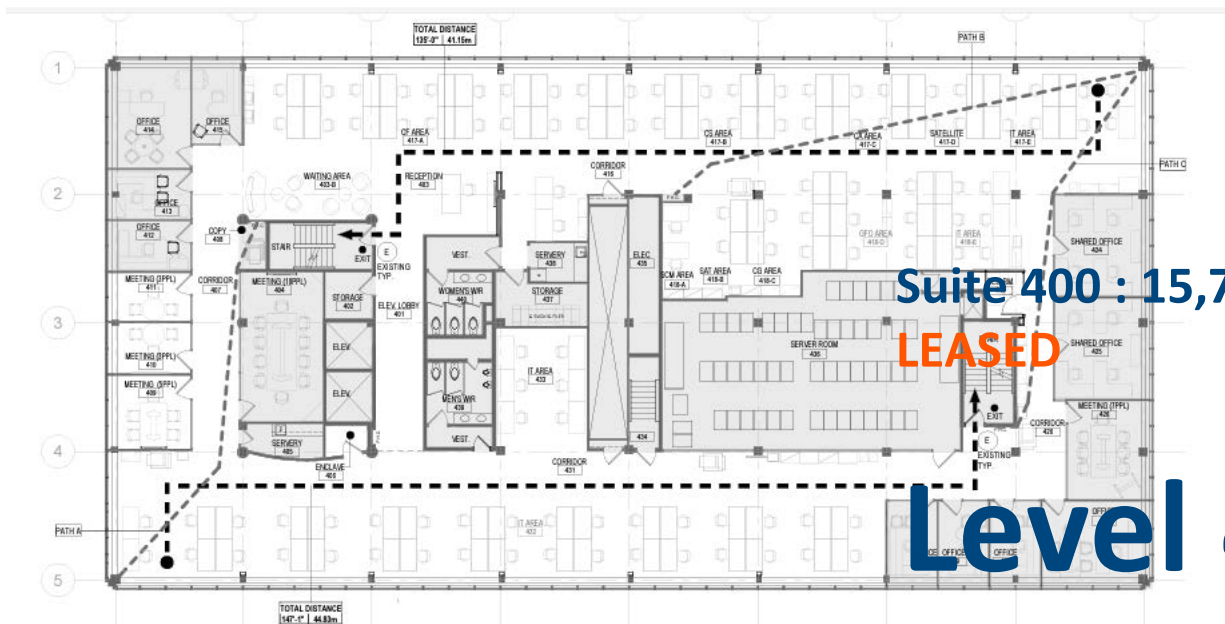
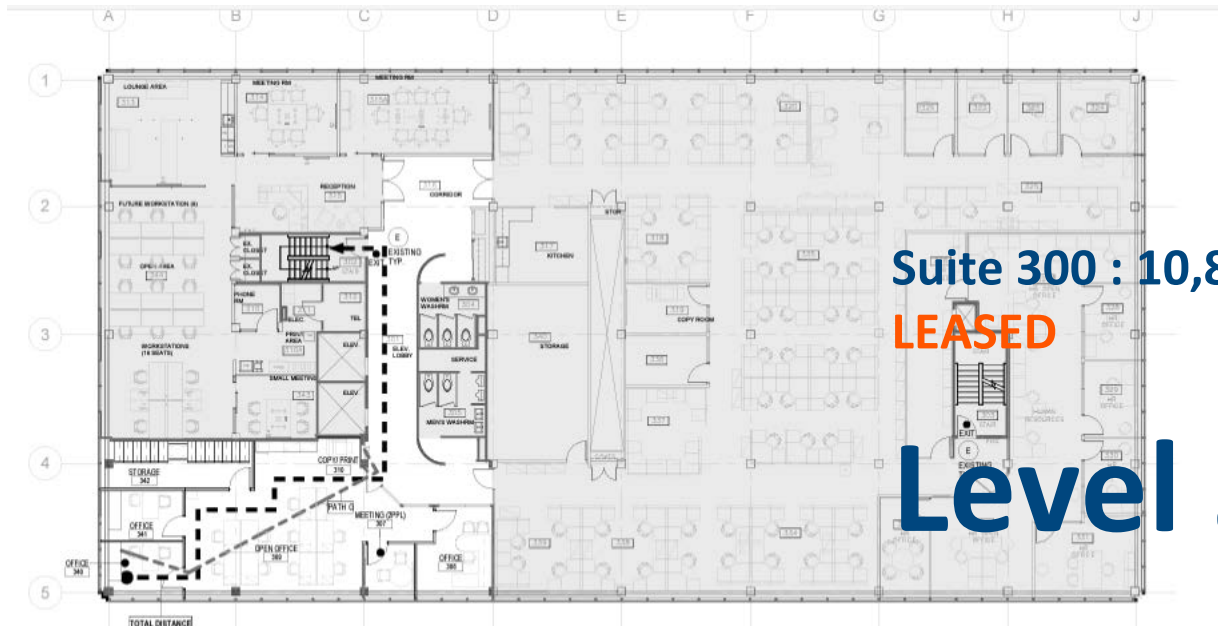


BGIS Global Integrated Solutions Realty, Brokerage
4175 14th Avenue | Markham, ON | L3R 0J2 | 1-877-897-6844

FOR LEASE

39 Wynford
Drive, Toronto, ON

FLOOR PLANS



This disclaimer applies to BGIS Global Integrated Solutions Realty Inc./BGIS Société Immobilière Solutions Globales Intégrées Inc. and to all other divisions of BGIS Global Integrated Solutions Canada LP ("BGIS"). The information set out herein, including, without limitation, any projections, images, opinions, assumptions and estimates obtained from third parties (the "Information") has not been verified by BGIS, and BGIS does not represent, warrant or guarantee the accuracy, correctness and completeness of the Information. BGIS does not accept or assume any responsibility or liability, direct or consequential, for the information or the recipient's reliance upon the Information. The Information may change and any property described in the Information may be withdrawn from the market at any time without notice or obligation to the recipient. All Rights Reserved. Not intended to solicit anyone currently under contract.

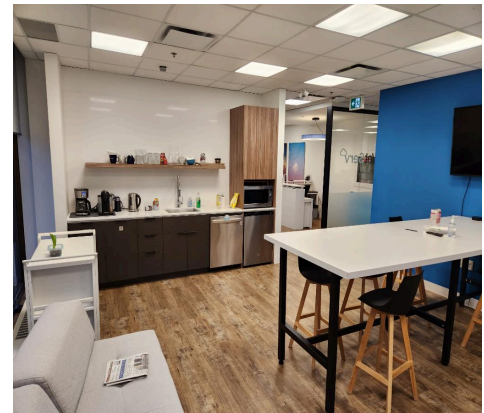
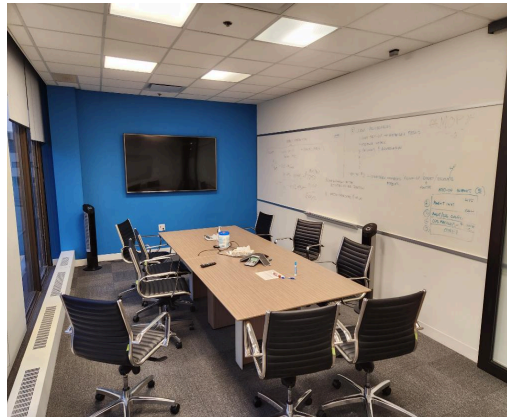
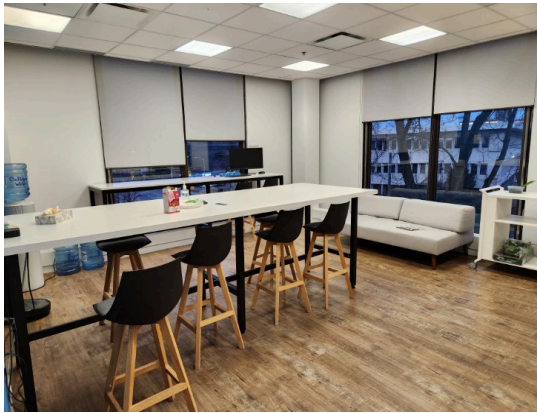


BGIS Global Integrated Solutions Realty, Brokerage
4175 14th Avenue | Markham, ON | L3R 0J2 | 1-877-897-6844

FOR LEASE

39 Wynford
Drive, Toronto, ON

PICTURES



This disclaimer applies to BGIS Global Integrated Solutions Realty Inc./BGIS Société Immobilière Solutions Globales Intégrées Inc. and to all other divisions of BGIS Global Integrated Solutions Canada LP ("BGIS"). The information set out herein, including, without limitation, any projections, images, opinions, assumptions and estimates obtained from third parties (the "Information") has not been verified by BGIS, and BGIS does not represent, warrant or guarantee the accuracy, correctness and completeness of the Information. BGIS does not accept or assume any responsibility or liability, direct or consequential, for the Information or the recipient's reliance upon the Information. The Information may change and any property described in the Information may be withdrawn from the market at any time without notice or obligation to the recipient. All Rights Reserved. Not intended to solicit anyone currently under contract.



BGIS Global Integrated Solutions Realty, Brokerage
4175 14th Avenue | Markham, ON | L3R 0J2 | 1-877-897-6844

FOR LEASE

**39 Wynford
Drive, Toronto ON**

PHOTOS



This disclaimer applies to BGIS Global Integrated Solutions Realty Inc./BGIS Société Immobilière Solutions Globales Intégrées Inc. and to all other divisions of BGIS Global Integrated Solutions Canada LP ("BGIS"). The information set out herein, including, without limitation, any projections, images, opinions, assumptions and estimates obtained from third parties (the "Information") has not been verified by BGIS, and BGIS does not represent, warrant or guarantee the accuracy, correctness and completeness of the Information. BGIS does not accept or assume any responsibility or liability, direct or consequential, for the information or the recipient's reliance upon the Information. The Information may change and any property described in the Information may be withdrawn from the market at any time without notice or obligation to the recipient. All Rights Reserved. Not intended to solicit anyone currently under contract.

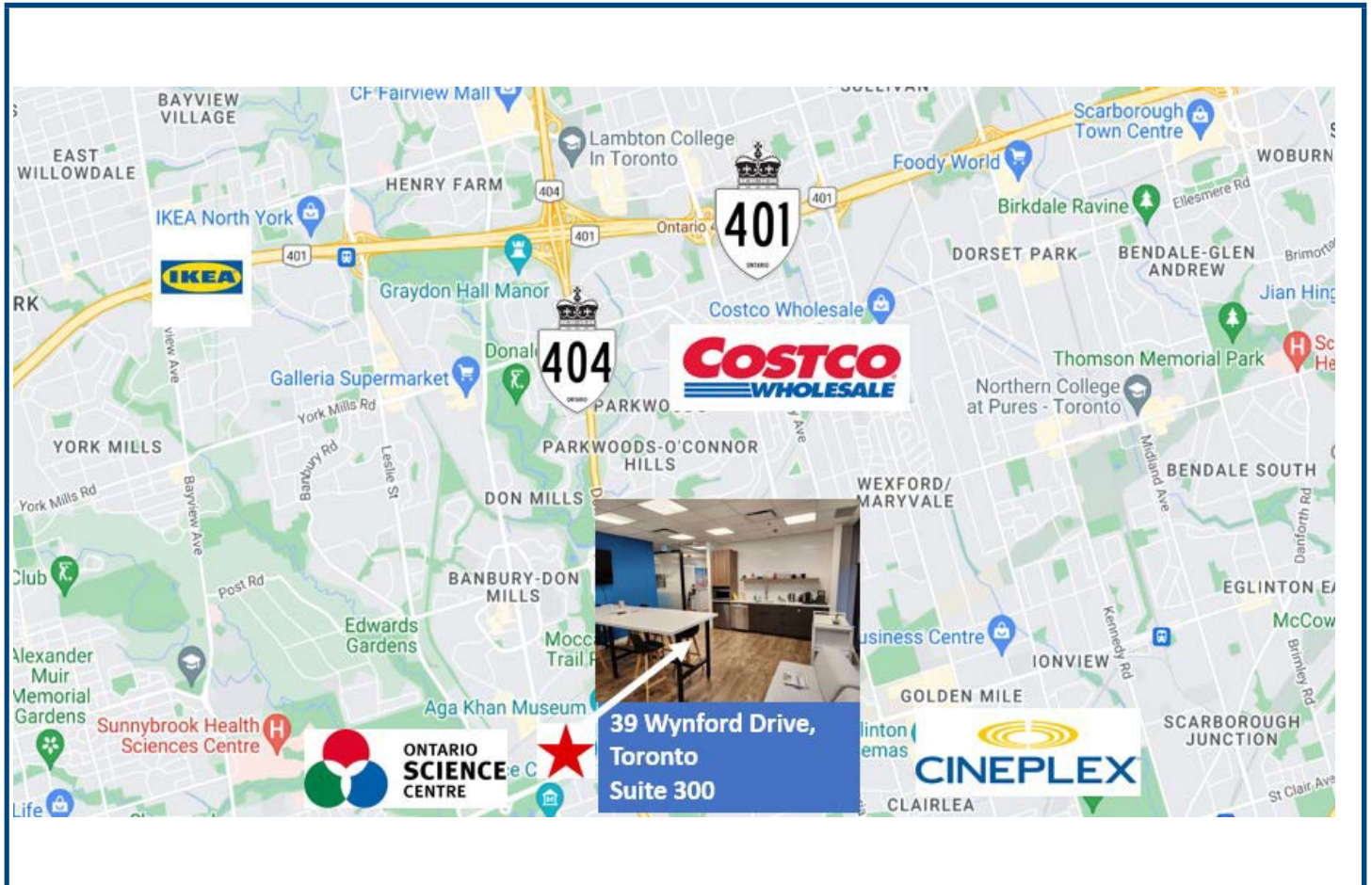


BGIS Global Integrated Solutions Realty, Brokerage
4175 14th Avenue | Markham, ON | L3R 0J2 | 1-877-897-6844

FOR LEASE

**39 Wynford
Drive, Toronto ON**

LOCATION MAP



FOR MORE INFORMATION PLEASE CONTACT:

**Sandra Donoso - Broker
Brokerage Coordinator
sandra.donoso@bgis.com
Cell: 416-436-3798**

This disclaimer applies to BGIS Global Integrated Solutions Realty Inc./BGIS Société Immobilière Solutions Globales Intégrées Inc. and to all other divisions of BGIS Global Integrated Solutions Canada LP ("BGIS"). The information set out herein, including, without limitation, any projections, images, opinions, assumptions and estimates obtained from third parties (the "Information") has not been verified by BGIS, and BGIS does not represent, warrant or guarantee the accuracy, correctness and completeness of the Information. BGIS does not accept or assume any responsibility or liability, direct or consequential, for the Information or the recipient's reliance upon the Information. The Information may change and any property described in the Information may be withdrawn from the market at any time without notice or obligation to the recipient. All Rights Reserved. Not intended to solicit anyone currently under contract.



BGIS Global Integrated Solutions Realty, Brokerage
4175 14th Avenue | Markham, ON | L3R 0J2 | 1-877-897-6844